

# TURNKEY SUBSTATION SOLUTIONS

## POWER INFRASTRUCTURE CONSTRUCTION SERVICES

**power**tx

Capability Statement

[www.powertx.com.au](http://www.powertx.com.au)




# COMPANY PROFILE

PowerTx Pty Ltd specialises in the design and construction, modification and testing of High Voltage electrical systems and related LV reticulation/ infrastructure. RPEQ certified design can be provided by our engineering consultants.

- Turnkey Substation Solutions
  - *Transportable, Modular & Fixed Design*
  - *Skid Mounted Switch Gear*
  - *Skid Mounted Substations*
- Design & Construct
- Construct Only
- Selection & Procurement Of High Voltage Switchgear & Equipment (VT's, CT's, CB's, ABS, ES, Surge Arrestors & Transformers)
- Provision Of Switchrooms & Switchgear (HV/LV/Coms)
- Lightning Protection, Study, Design & Construction
- Site Survey, Profile & Drainage
- Civil Design, Construction, Earthworks, Crushed Rock /Asphalt, Fencing & Signage
- Lighting Study & Design
- Trenching, Conduits, Pits & Cabling
- Cable Support Systems (Including Cable Ladder, Cable Tray, Conduit Etc)
- Cabling (Including Major Cable Winching Operations)
- High Voltage Terminations & Testing
- Fibre Optic Terminations & Testing
- LV & HV Power Reticulation
- Structural Design, Fabrication & Erection
- Soil Resistivity Testing
- Earth Grid Modelling
- Verification Of Earth Grid Design
- Earth Grid Construction
- Earth Grid Testing Including Step & Touch Potential Verification
- HV System Testing & Commissioning
- RPEQ Design/Electrical/Mechanical/Civil
- Temporary Power Supply (Industrial & Mining)
- Dry Ice Blasting Service for the cleaning of HV & LV Switchgear





A black and white photograph of a construction site, likely for a large concrete foundation or floor slab. A dense grid of steel reinforcement bars (rebar) is visible, laid out within a wooden formwork. In the background, there are construction materials, including a sawhorse and some debris. A large, semi-transparent red circle is superimposed over the center of the image, containing a list of industry sectors in white, bold, sans-serif capital letters.

**MINING & RESOURCES**  
**RENEWABLE PROJECTS:**  
**SOLAR FARMS / WIND FARMS**  
**INFRASTRUCTURE**  
**POWER STATIONS**  
**WATER & WATER TREATMENT**  
**UTILITIES**  
**OIL & GAS**

**power**tx

# INDUSTRY ASSOCIATIONS

PowerTx enjoys a strong and lasting relationship with the Powerline Construction industry leader Persal & Co. Persal & Co have constructed over 3,000kms of 66kV and 132kV transmission line for clients such as BMA Coal Operations, Anglo Coal, Xstrata, Ergon and Powerlink. The combination of PowerTx and Persal & Co brings synergies and economies which produce a broader scale of capabilities and resources.

## MAJOR PROJECTS COMPLETED BY POWERTX

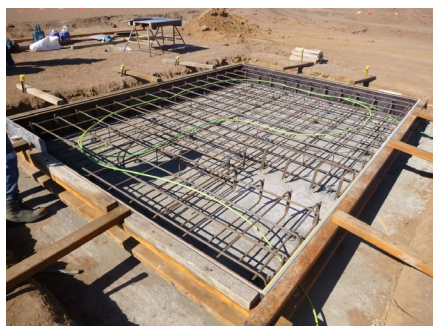
WORKS	SITE	CLIENT
Design, Construct & Project Management of a 66/11kV 25 MVA Substation & associated mine site HV reticulation for the VSA2 Vent Fan & Underground Power Project.	Kestrel South Mine	Persal & Co For Kestrel Coal (Current Contract)
Construction and commissioning of the 33/132kV 100MVA substation.	Rugby Run Solar Farm	Adani Renewables
Design, Construct & Project Management of a 66/11kV 20 MVA Substation for the Longwall Extension feeder.	Grasstree Underground Mine	Persal & Co for Anglo/Capcoal
Augmentation of the 66kV Boundary Substation to include 2 x 66kV Switching Stations.	German Creek Open Cut Mine	Persal & Co for Anglo/Capcoal
Design, Construct & Project Management of a Temp 66/11kV 8/10 MVA Substation.	Grasstree Underground Mine	Persal & Co for Anglo/Capcoal
Construction of a 132kV to 11kV 15MVA Temporary Substation.	Eagle Downs JV mine construction	Persal & Co for Ampcontrol
HV Underground Cable installation, termination and testing site wide	BMA Caval Ridge Mine Construction	Persal & Co for Bechtel (Duration: April 2013 – May 2014.)
Construction of 66kV Switching/Metering Station including incoming & outgoing 66kV landing structures.	Byerwen Mine	Q Coal
Installation of 10/12.5MVA 66/11kV Main Substation & PFC Unit & Associated mine site HV reticulation.	Byerwen Mine	Q Coal
Upgrade/Replacement of Substation and installation of an additional pump at the Worked Water Dam.	Coppabella Mine	Peabody Energy
Installation of 11kV Power Factor Correction units.	Coppabella mine	POWINS Pty Ltd for Peabody Energy
Replacement of HV Ring Main units.	Roma area (Origin Energy gas fields)	ABB Australia
HV to LV infrastructure upgrade.	Millennium mine	Persal & Co for Peabody Energy
Electrical & Instrumentation Installation for Raw Coal Handling.	Grosvenor Mine	Persal & Co for Anglo/Grosvenor Coal Project





*Projects senior personnel having had direct involvement in from estimation, construction to project management during employment with i.Power Solutions Pty Ltd*

- Oaky Creek Mine 66/11kv main substation and site power reticulation including 11kV vent fan substation
- Kemmis Creek 132/11kV temporary power substation for Hail Creek Mine
- Hail Creek Mine 66/22kV main substation and site power reticulation
- Newlands North Mine 66/11kv main substation and site power reticulation including 11kV vent fan, MIA and in-pit portal substations
- Crinum East Mine 66/11kv main substation and site power reticulation including 11kV generator, MIA and in-pit portal substations
- Curragh North Mine 66/22kV main substation and site power reticulation
- Carborough Downs Mine 66/11kv main substation and site power reticulation including 11kV vent fan, MIA and portal substations, subsequent augmentation of the substation to facilitate 2 x 25MVA transformers
- Isaac Plains Mine 66/11kV main substation
- Millennium Mine 66/11kV main substation and site power reticulation
- Yarrabee Mine 66/11kV main substation and site power reticulation
- Goonyella/Riverside Mine 66/11kV main substation
- Norwich Park Mine 66/11kV main substation and site power reticulation
- Ergon Energy Aramara 132 kV Switching Station
- Ensham Trial Underground Mine 66/11kV main substation and site power reticulation
- Kestrel Mine Expansion site HV Reticulation
- Xstrata George Fisher Mine 132/11kV Main Switchyard extension
- Daunia Mine 66/11kV main substation and site power reticulation
- Caval Ridge Mine 66/11kV main substation







## POWERTX EQUIPMENT

**PTX have their own fleet of mine site compliant equipment**

- Light Vehicles
- Telehandler
- Excavator/Track Loader
- Tilt Tray Truck
- Dual Axle Trailers

## TESTING & COMMISSIONING

**We complete our own inhouse testing**

- Primary Injection Testing
- Secondary Injection Testing
- Ductor Testing
- IR & HI Pot Testing
- VLF Testing

## HEALTH, SAFETY ENVIRONMENTAL QUALITY

**PowerTx Pty Ltd Subscribes to the accredited NECA Health, Safety & Environment Management Systems**

- Safety Management System (Site Specific)
- Environmental Plan - PowerTX Pty Ltd (Site Specific)
- Quality Management System Plan - PowerTX Pty Ltd (Site Specific)
- Comprehensive library of ITP's & ITR's (Site Specific)

***We are currently in the process of obtaining the following ISO accreditations:***

**QUALITY  
ISO 9001**

**ENVIRONMENTAL  
ISO 14001**

**HEALTH & SAFETY  
ISO 45001**



# CLIENTS:

**BMA // GLENCORE // KESTREL // PEABODY  
KESTREL COAL RESOURCES // ABB  
EAGLE DOWNS COAL // ANGLO AMERICAN  
ADANI RENEWABLES // Q COAL  
EPSA // TERRACOM**







# powertx

## CONTACT DETAILS

### **Doug Legge**

Managing Director

**M:** 0455 187 162

**mail:** [doug.legge@powertx.com.au](mailto:doug.legge@powertx.com.au)

### **Richard McGrath**

Manager - Projects & Services

**M:** 0400 447 446

**mail:** [richard.mcgrath@powertx.com.au](mailto:richard.mcgrath@powertx.com.au)

### **Administration**

Administrator - Projects & Services

**Phone:** 07 49576284

**mail:** [admin@powertx.com.au](mailto:admin@powertx.com.au)

### **POWERTX PTY LTD**

Unit 13, Site Business Park,

30-36 Margaret Vella Drive, Paget QLD 4740,

**PO Box 4280, SOUTH MACKAY QLD 4740**

**Licence no:** 75802

**ABN** 66 162 632 224

**[www.powertx.com.au](http://www.powertx.com.au)**